



Afon Aeron
by Pat Brunson
Interpretation of the river in Aberaeron, West Wales in Summer
Bobbin lace
31x47



Cuckmere Meanders
by Pamela Layzell
Geographers know the Cuckmere meanders, but the river doesn't flow through them. A mid 19th century canal 'lets the river flow by'. Their map, repeated eight times, forms this design
Needlelace
39 (diagonal)



Blue Danube
by Deborah Robinson
Knitted lace decorated with tatted fish
19x160



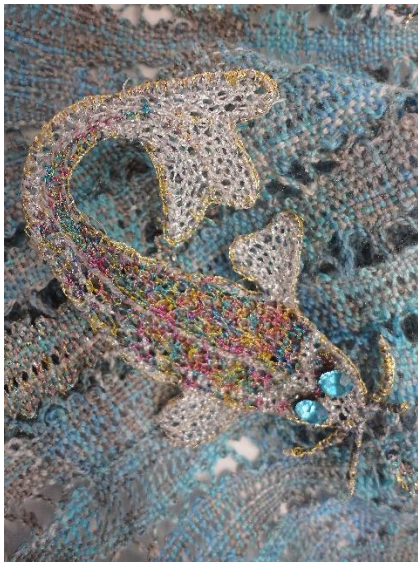
Dreaming the dream or living the nightmare
by Kitty Mason
Created in a mixture of techniques, though mainly in bobbin lace, using a variety of textured threads, materials and colours
43x43



Felled
by Pat Brunson
Stump left in situ on bank after tree had been cut down and removed from the river
Needle felted background, with needle lace stump
20x20



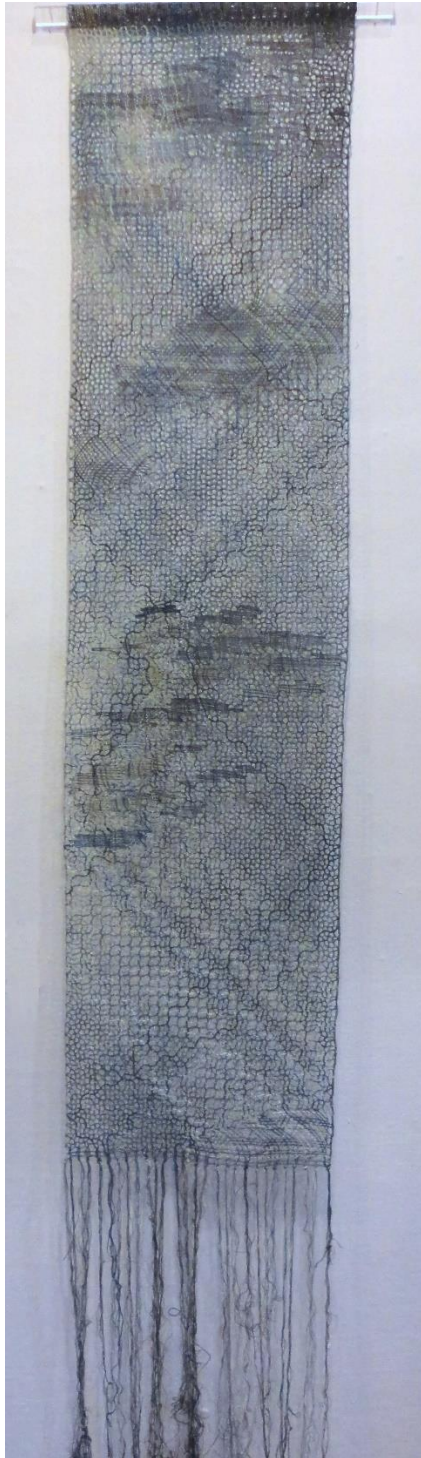
Ghosts of the Tyme
by Gil Dye
Cape
River of bobbin lace, needle lace figures and photographic transfers
70cm drop at back, 60cm width at shoulders



Fish
by Ann Collier
Fish brooch in needle lace to accompany scarf
7x11



Left by the flow
by Gil Dye
Small bag with needle lace panel
12x21



Passing by
 by Alison Tolson
 Bobbin lace worked in various materials including linen, cotton,
 paper and rayon
 15x38



London Bridge
 by Anne Dyer
 "A crowd flows over London Bridge, so many, I had not thought
 death had undone so many."
 T.S.Elliott 1922
 Cardboard construction covered with bobbin lace and distressed
 velvet. Figures of macramé over wire and needle running on net
 42x64x10



Pharaoh and family go hunting
 by Ann Collier
 Background in bobbin lace, figures in needle lace
 35x52



Red River Valley
 by Deborah Robinson
 Knitted lace plus artefacts – crocheted stones
 39x96



River Fish
by Ann Collier
Scarf

Bobbin lace interspersed with fish in metallic thread- silk and merino wool
108x17



Stages of the River Sever
Birth, Life, Death
by Mary Coleman

Three hangings depicting the course of the Sever as it flows from infancy to its part in the industrial revolution, the Sever in its middle course flowing through the gently rolling hills of Worcestershire, and the Sever in its death throes flowing past the devastation of wrecked trows
Free lace using mixed fibres and needle felting
Each panel, 60x20



Shoal

by Pamela Layzell
Sussex

Inspired by a shoal of metal fish on a church in Newhaven, East Sussex
Wire bobbin lace
30x100



Sussex Ouse
by Pamela Layzell

This is a map of the Ouse and its tributaries
Bobbin lace
62x61



Sunlight on the river

by Sharon Lidbury

Free lace in cotton and rayon, using mixed grounds on chiffon
Length of dress 116 cm



The invading river of information

by Anne Dyer

There is such a constant river of information flowing into our brains that we cannot hold it all. Invited or not, wanted or not, useful or not. It is written in an international language and makes no sense to most of us. Some gets lost in the filing cabinet of our head, hard to retrieve. Some of it leaks out.

Modified milliners head covered with papier mache, copper wire and computer wire, hot glue numbers

40x53x17



The leaking dam

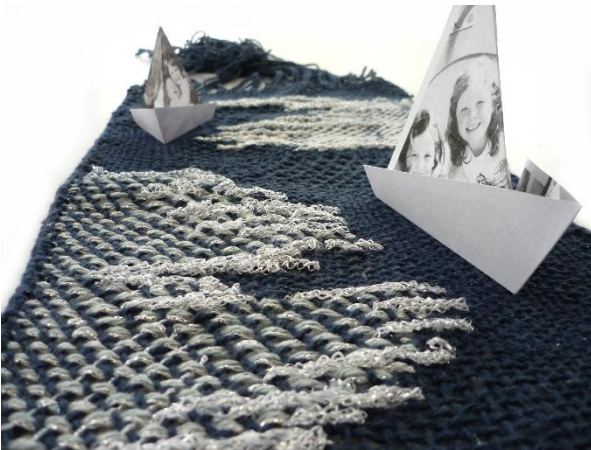
by Anne Dyer

Men copying beavers to control flood water on a small stream racing on to the flat lands below
Photo, small branches, sewing cotton and tinsel threads in half and double stitch, glass drops

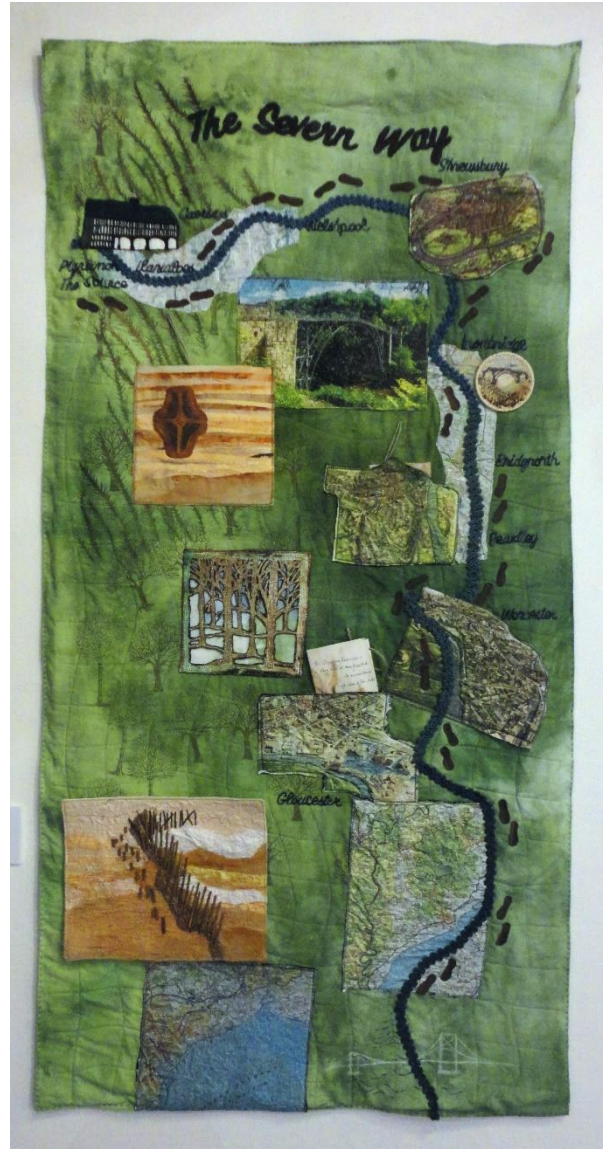
42x53



The Millau Bridge in France
by Ann Collier
Bobbin lace
28x46



The River of Time
by Robina Melville
Paper boats sail down a river of bobbin lace.
Made in a variety of cotton, linen and metallic threads
100x20 (plus 30cm fringe)



The Severn Way
by Pat Gibson
A mixed media piece representing the course, geology, industry
and tourism along the river.
Needle lace, weaving, Roumanian crochet, momagami and printing
150x70



Tipping Point
by Ann Wheeler

The thoughtless disposal of the detritus of modern living is now recognised as a major problem of our rivers and seas.

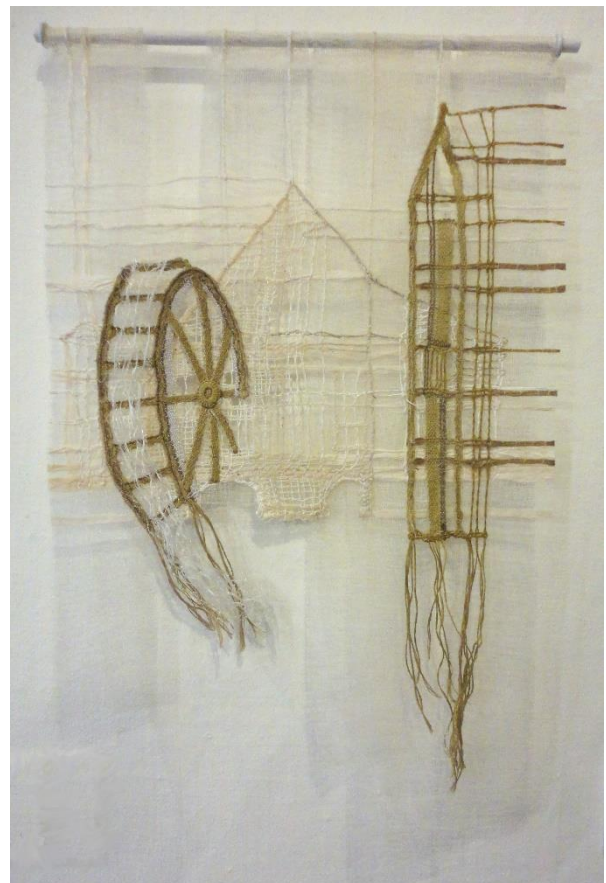
Knitted fishing line and found detritus
270x45



Watching the River

Anne Dyer

Embellisher, crochet, split ply, normal and gimp bobbin lace,
organza, cooking foil, card, calico sequins
14x64x30



Water Power

Ann Wheeler

Standing in Winchester since Saxon times and being the oldest working water mill in the country, Winchester water mill on the river Itchen, still produces flour daily

String and thread bobbin lace
58x39



Yellow River
Deborah Robinson
Knitted lace decorated with crocheted flowers
21x108