

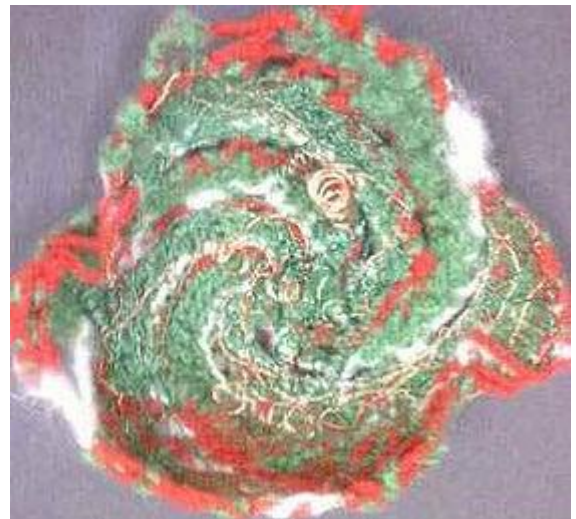


A point of view
by Ann Allison

A set of logarithmic ovals, which change their configuration, depending on your point of view. Bobbin lace in enamelled copper wire



Experiments in dimensional fans
by Ann Collier
A combination of origami and pop-up art

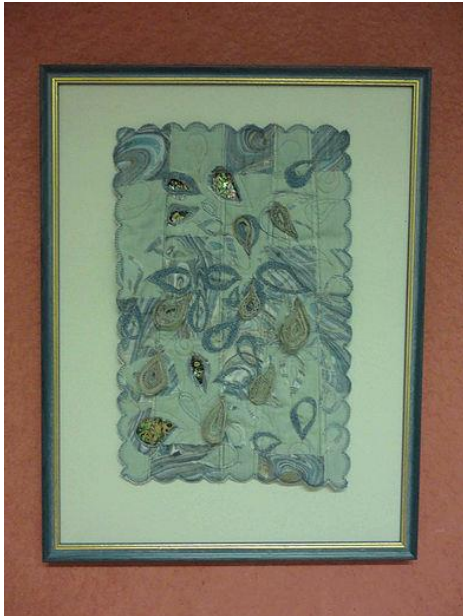


Felt bowl
by Mary Coleman



Deborah's secret
by Deborah Robinson

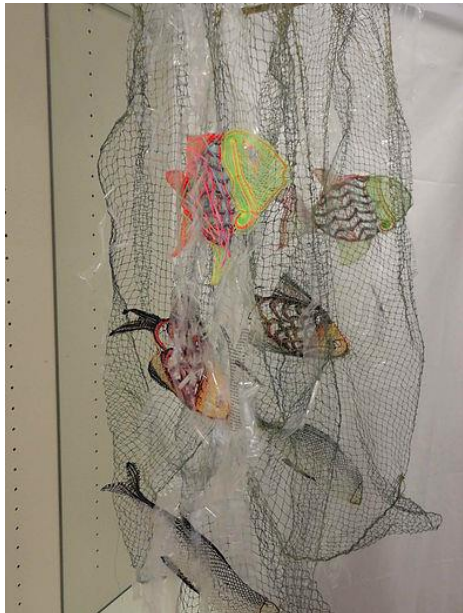
Black and pink made from old, washed lingerie



Hanging
by Mary Coleman



Hanging, detail
by Mary Coleman



If wishes were fishes
by Kitty Mason

Reflects that the dreams of youth change over time into the wishes of the older person. Bobbin lace in mixed threads and plastic bags.

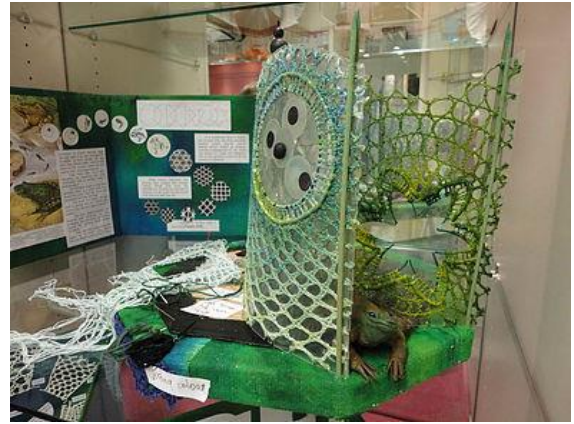


Partial stellated icosahedron
by Pamela Layzell

Putting points on all 20 faces of an icosahedron made for a very unstable solid, so 4 points had to go. Cotton, wool and wire needlelace
18cm x 18cm x 14cm



Leaves in the landscape
by Margaret Clark



Metamorphosis
by Anne Dyer
Many things do or can change quietly from one shape to another,
sometimes along only one possible route and sometimes at the
whim of chance or the maker



Pancake rocks
by Pat Gibson

A miniature hanging using a needlelace stitch to represent rock formation. Thread is stainless steel with a linen core so giving the thread a stiffness of its own.



Purse

by Pat Gibson

A geometric shape manipulated in PaintShop Pro. Worked in needlelace with an emphasis on the cordonette decoration.



Red letter day 1
by Alison Tolson

Worked in knitting yarn, linen and wire, using a simple pattern shape to create temporary wearable accessories (1 of 3 pieces)



Red letter day 2
by Alison Tolson

Worked in knitting yarn, linen and wire, using a simple pattern shape to create temporary wearable accessories (1 of 3 pieces)



Red letter day 3
by Alison Tolson

Worked in knitting yarn, linen and wire, using a simple pattern shape to create temporary wearable accessories (1 of 3 pieces)



Rough diamonds
by Robina Melville

Tambour lace inspired by the merging, shifting triangular shapes seen on the surface of a diamond viewed through a microscope. Worked in colours of the Suffrage movement. Silk, cotton and metallic thread.



Rough diamonds, detail
by Robina Melville

Tambour lace inspired by the merging, shifting triangular shapes seen on the surface of a diamond viewed through a microscope. Worked in colours of the Suffrage movement. Silk, cotton and metallic thread.



Seven sorts of shape shifting, detail 2
by Gil Dye

Seventeenth century motifs interpreted in a selection of techniques and materials, illustrating seven linear patterns.



Seven sorts of shape shifting, detail 1
by Gil Dye

Seventeenth century motifs interpreted in a selection of techniques and materials, illustrating seven linear patterns.



Seven sorts of shape shifting, detail 3
by Gil Dye

Seventeenth century motifs interpreted in a selection of techniques and materials, illustrating seven linear patterns.



Seven sorts of shape shifting
by Gil Dye

Seventeenth century motifs interpreted in a selection of techniques and materials, illustrating seven linear patterns.



Sliding lines
by Anne Dyer

From the ideas of Escher and the patterns of change ringing, moving in a circle from simplicity to simplicity through great elaboration.



Sweethearts
by Deborah Robinson
Made from old lace



There has to be an odd one
by Pat Gibson

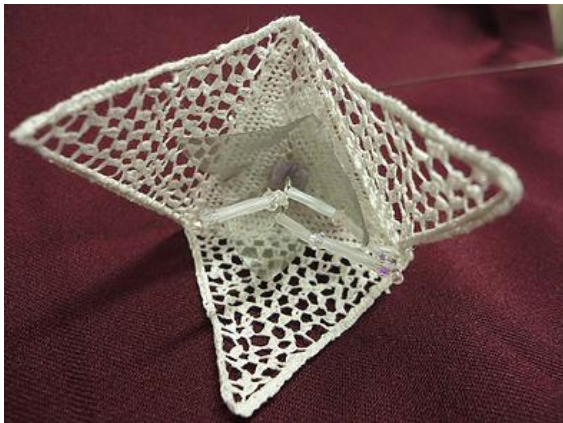
Fuchsia flowers in a stylised format. Worked in paper thread and attached to cheese wire to give mobility and movement. In a vessel of Pelmet Vilene.



There has to be an odd one, detail 1

by Pat Gibson

Fuchsia flowers in a stylised format. Worked in paper thread and attached to cheese wire to give mobility and movement. In a vessel of Pelmet Vilene.



There has to be an odd one, detail 2

by Pat Gibson

Fuchsia flowers in a stylised format. Worked in paper thread and attached to cheese wire to give mobility and movement. In a vessel of Pelmet Vilene.



Three

by Ann Wheeler

Three free-standing bobbin/needlelace figures 30cm tall



Three, detail

by Ann Wheeler

Three free-standing bobbin/needlelace figures 30cm tall



Tumbling tetrahedra
by Pamela Layzell

As I played with turning equilateral triangles, the triangles suddenly turned into 3 dimensional tetrahedra Needlelace, felt, nylon net and wire. 25cm x 38cm



Wedding fan

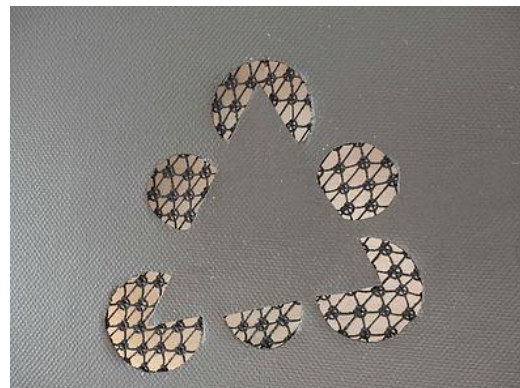
by Deborah Robinson

Small hearts edging, made from pieces of modern lace



Tumbling tetrahedra, detail
by Pamela Layzell

As I played with turning equilateral triangles, the triangles suddenly turned into 3 dimensional tetrahedra Needlelace, felt, nylon net and wire. 25cm x 38cm



What triangle?

by Pamela Layzell

Is there a triangle here? Needlelace and acrylic on canvas. 20cm x 20cm



Wire bowl

by Mary Coleman