



Driftwood
by Alison Tolson
Handbag with bobbin lace inspired by driftwood found on Fife beach 20x35



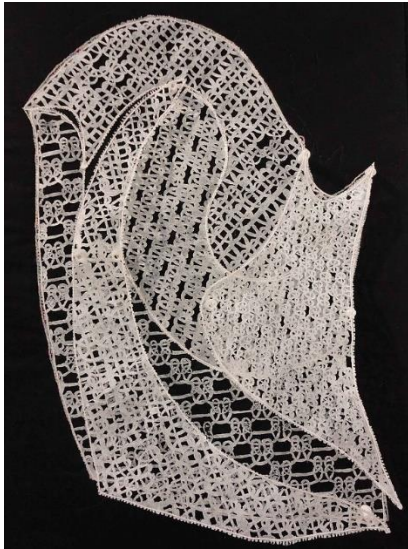
Golden eyes
by Ann Collier
Bobbin lace with a centre of sculptured stiffened shapes 33x39



Experiment with wire, wool and silk
by Mary Coleman
A hanging of lace made with bobbins using wool and mixed fibres. Lace like insertions using silk paper, wire netting and printing. 85x45



Harlequin
by Ann Collier
A seven panelled fan, with the centre made of needlelace flowers, on a bobbin lace ground with extra wired triangles attached to each stick. 64x102



Hot lace

by Pat Gibson

Needlelace 'stitches' created using a soldering iron on Lutrador
64 x 80



If wishes were fishes

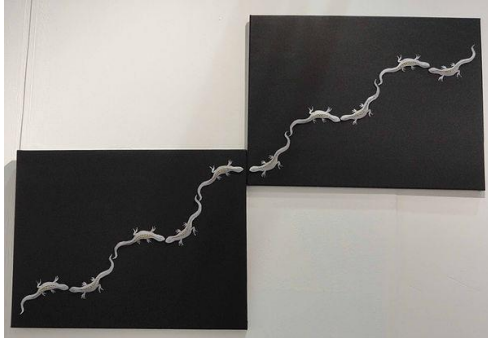
by Kitty Mason

A wall hanging in bobbin lace using a mixture of techniques in cotton, linen, synthetic and metallic threads on a base of knotted netting 100 x 100



Line

by Anne Dyer 15x180



Lizard line- two half turns

by Gil Dye

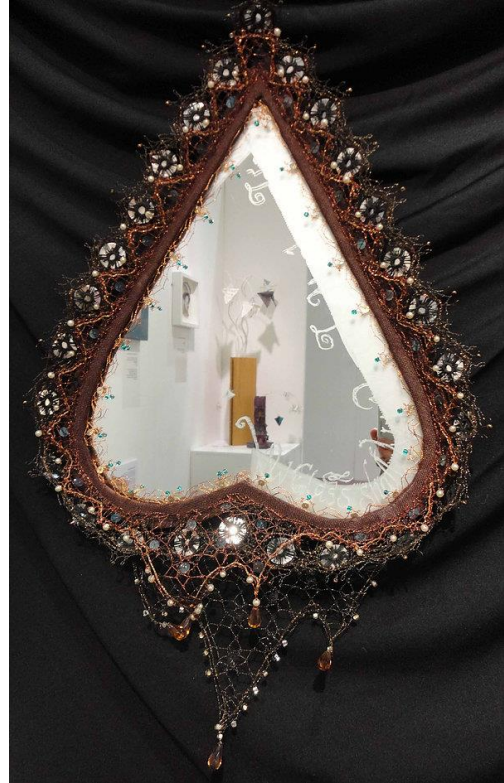
Bobbin-made lock-stitch mesh in fine gold thread, inserted in paper
45 x 60



Metamorphosis

by Anne Dyer

Revolving unit showing the changes from frog spawn to frog, from
circle to flower in geometry and thread. Various lace methods.
60 x 30



My glass shall not persuade me I am old

by Anne Dyer

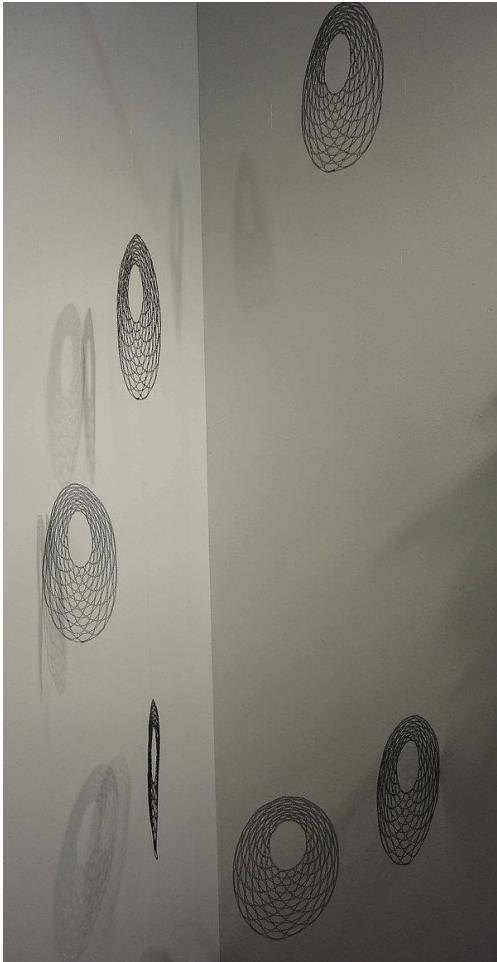
Design developed from study of triangles. Copper wire lace 30 x 40
x 40



Raschel

by Deborah Robinson

Normandy patchwork lace fan. Shapes are cut from old/unwanted
pieces of lace and reassembled to form a new design 100 x 56 x 5



Shadowy corner
by Ann Allison

Logarithmic ovals throwing shadows. Black covered copper wire.
Bobbin lace 190x100x50



Shifting shoreline 1
by Alison Tolson

Dress and stole with bobbin lace inspired by the changing shapes of coastlines and washed up debris 130x45 and 200x60



Shifting shoreline 2
by Alison Tolson

Shoes with applied bobbin and needlelace inspired by the changing shapes of coastlines and washed up debris 18x23x14



Snail trail- reflection and one half turn
by Gil Dye
Bobbin lace, assorted yarns 270x40



There has to be an odd one, see how they have grown
by Pat Gibson
Stylised fuchsia flowers worked in needlelace using fine paper covered wire and silk thread. The larger flowers are worked using jute and linen. All are attached to cheese wire gocms high



The older I get
by Kitty Mason
Three panels in bobbin lace in a mixture of techniques and materials, including cotton, synthetic and metallic threads and meaningful objects, photographs and pictures 163 x 40



Three again
by Ann Wheeler

Three figures in bobbin lace and knitting 160x60



Tumbling tetrahedra
by Pamela Layzell

As I played with twisting equilateral triangles, the triangles suddenly turned into 3 dimensional tetrahedra. Machine lace on a wire frame 80 x 65 x 12



What Triangle
by Pamela Layzell

Is there a triangle here? Needlelace on wooden frames 100 x 100



We met together
by Robina Melville

Bobbin and needlelace cat, crow and hare animal masks inspired by the vivid descriptions of shape shifting in Isobel Gowdie's witchcraft confessions. Cotton, linen and metallic threads. plinth. 110 x 85 x 55