



**Whirling dervish**  
by Mary Coleman  
20cmx17cm x17cm



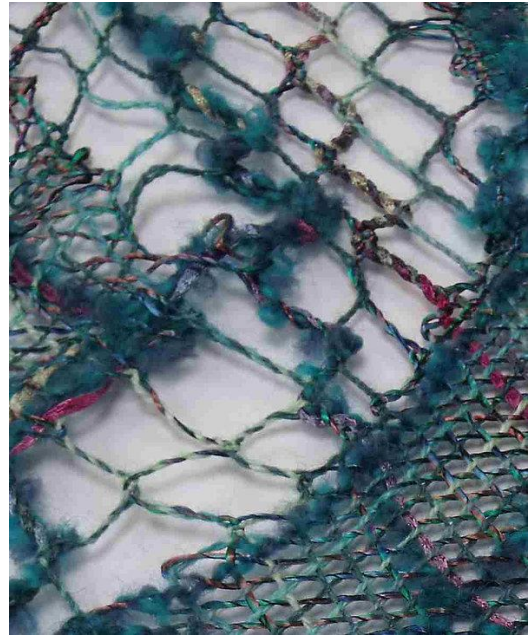
**Captivate 1 and 2**  
by Mary Coleman  
Copper wire, thread and silk paper 15x9x9cm and 12x8x8cm



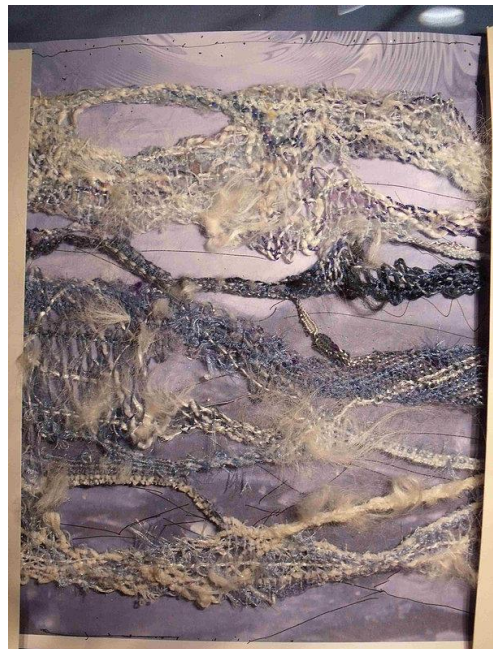
**Wrought and rusty**  
by Mary Coleman  
80cmx24cm x26cm



**Rushes**  
by Mary Coleman  
Woollen yarns and silk paper 40x17cm



**Meandering in wool**  
by Mary Coleman



**Fractured ice**  
by Mary Coleman  
Woollen and mixed yarns  
30x30x4cm



Experiment with wire, wool and silk

by Mary Coleman

A hanging of lace made with bobbins using wool and mixed  
fibres. Lace like insertions using silk paper, wire netting and  
printing. 85x45

Exhibited at Shape Shifting, 2014